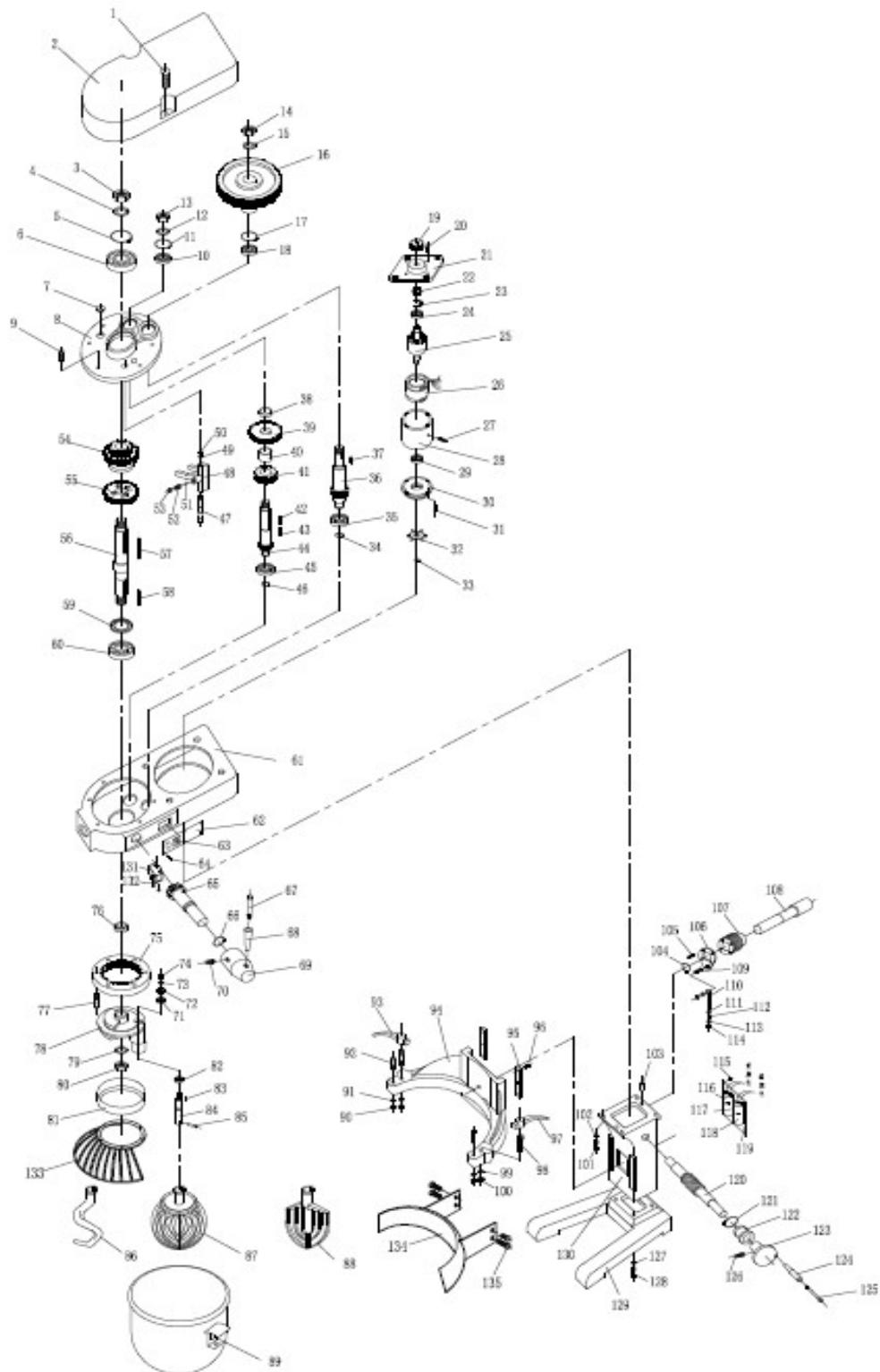


МИКСЕР ПЛАНЕТАРНЫЙ HURAKAN HKN-IP50FM




МИКСЕР ПЛАНЕТАРНЫЙ HURAKAN HKN-IP50FM

Поз	Наименование детали				
1	Screw M6X110	58	Dowel 8X55	115	Screw M4X8
2	Cover	59	Oil seal 38X58X12	116	Capacitor 200UF
3	Nut M22X1.5	60	Bearing 6207	117	Screw M6X15
4	Washer 22	61	Case	118	Capacitor 35UF
5	Circlip for hole D62	62	Label	119	Plate
6	Bearing 6206	63	Switch	120	Worm shaft
7	Oil-lide cover	64	Screw M5X8	121	Snap spring D30
8	Box cover	65	Shift gear	122	Locating sleeve
9	Screw M6X25	66	Snap spring D20	123	Hand wheel
10	Bearing 6204	67	Shift level handle core	124	Hand wheel nandle
11	Circlip for hole D47	68	Shift level handle	125	Core shaft
12	Washer 26	69	Shift level seat	126	Screw M8X16
13	Nut M16X1.5	70	Screw M8X16	127	Spring washer 12
14	Nut M16X1.5	71	Bearing 6205	128	Screw M12X45
15	Washer 16	72	Planetary gear Z=22	129	Footing
16	Synchronous belt wheel Z=68	73	Washer 16	130	Guide pillar
17	Circlip for hole D47	74	Nut M16X1.5	131	Micro switch
18	Bearing 6204	75	Ring gear Z=70	132	Screw M4X25
19	Synchronous belt wheel Z=13	76	Spacer Sleeve	133	Protective guard
20	Screw M5X20	77	Screw M6X255	134	Fixed crash barrier
21	Front Cover	78	Planetary gear holder	135	Screw M4X25
22	Centrifugal switch	79	Washer 22		
23	Bottom plate	80	Nut M22X1.5		
24	Bearing 6205	81	Ring		
25	Rotor	82	BeaRING 6006		
26	Stator	83	Dowel 8X18		
27	Fastening screw M6X15	84	Stir shaft		
28	Motor shell	85	Straidht pin 10X30		
29	Bearing 6205	86	Dough mixer		
30	Bake Cover	87	Stirred ball		
31	Screw M5X20	88	Agitator		
32	Motor fan	89	Charging barrel		
33	Snap spring D15	90	Nut M8		
34	Snap spring D20	91	Ring washer 8		
35	Bearing 6204	92	Anchor Pin		
36	Input shaft Z=13	93	Lock handle		
37	Dowel 6X30	94	Barrell holder		
38	Spacer Sleeve	95	Flat clamp		
39	Gear Z=34	96	Screw M8X16		
40	Spacer Sleeve	97	Lock handle		
41	Gear Z=24	98	Locking pin		
42	Dowel 6X20	99	Washer 12		
43	Dowel 6X20	100	Nut M12		
44	Second motion shaft Z=15	101	Screw M12X35		
45	Bearing 6204	102	Ring washer 12		
46	Snap spring D20	103	Straight Pin 8X16		
47	Fork Shaft	104	Snap spring D14		
48	Shift fork	105	Screw M8X20		
49	Ring washer 10	106	Worm wheel splint		
50	Nut M10	107	Lifting gear		
51	Steel ball D8	108	Lifting worm shaft		
52	Posicioning spring	109	Screw hook		
53	Screw M10X20	110	Lifeing hook		
54	Double gear Z=27,37	111	Washer 12		
55	Gear Z=46	112	Spring		
56	Output shaft (3)	113	Washer 12		
57	Dowel 10X115	114	Nut M12		