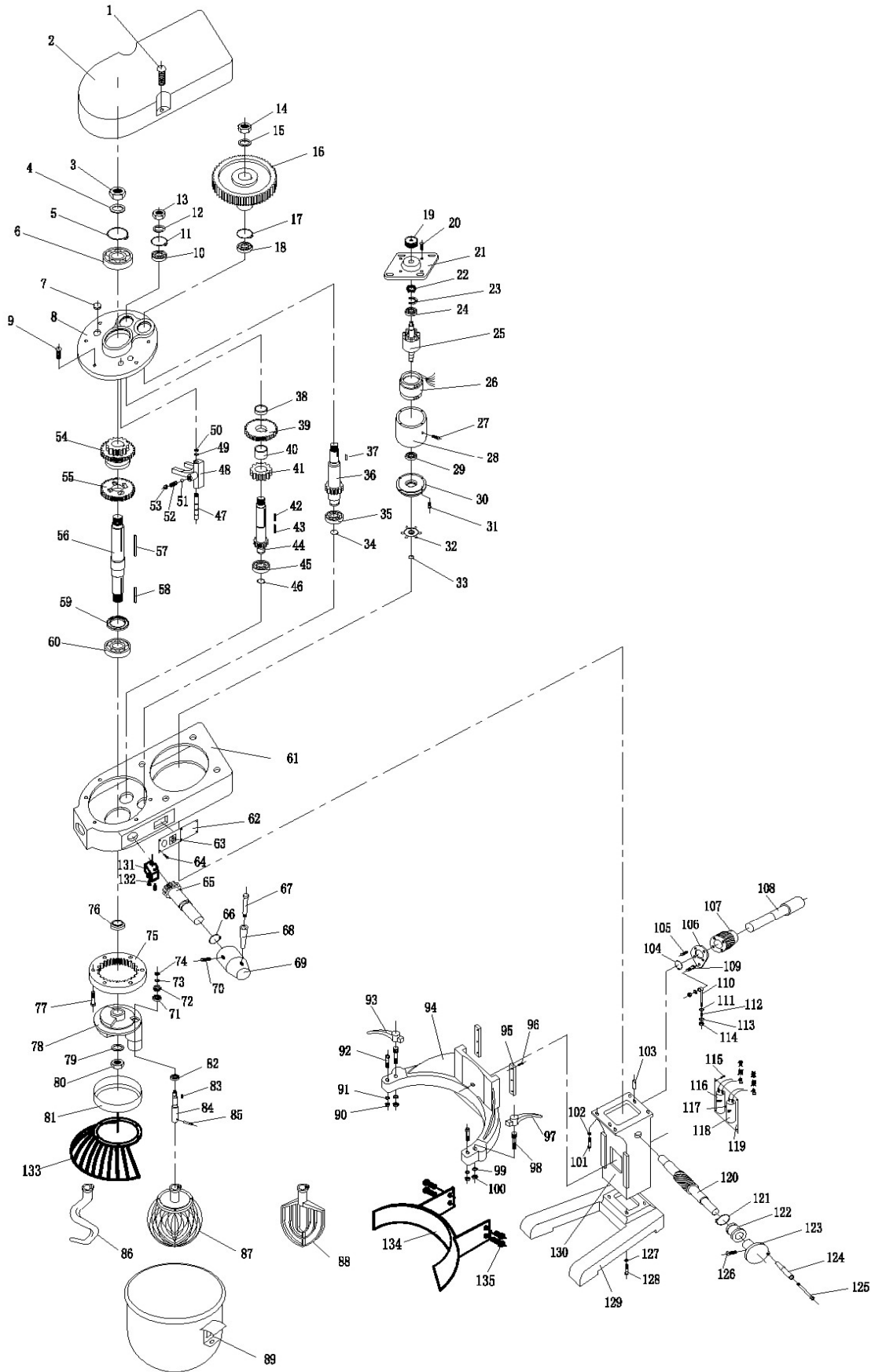


МИКСЕР ПЛАНЕТАРНЫЙ HURAKAN HKN-IP50FZ


МИКСЕР ПЛАНЕТАРНЫЙ HURAKAN HKN-IP50FZ

Поз	Наименование детали	Кол						
1	Screw M6X110	2	59	Oil Seal 38X58X12	1	117	Screw M6X15	1
2	Cover	1	60	Bearing 6207	1	118	Capacitor 35UF	1
3	Nut M22X1.5	1	61	Case	1	119	Plate	1
4	Washer 22	1	62	Label	1	120	Worm shaft	1
5	Circlip for hole D62	1	63	Swith	1	121	Snap Spring D30	1
6	Bearing 6206	1	64	Screw M5X8	5	122	Locating Sleeve	1
7	Oil-Hde Cover	1	65	Shift Gear	1	123	Hand wheel	1
8	Box cover	1	66	Snap Spring D20	1	124	Hand wheel handle	1
9	Screw M6X25	4	67	Shift lever handle core	1	125	Core Shaft	1
10	Bearing 6204	1	68	Shift lever handle	1	126	Screw M8X16	1
11	Circlip forhole D47	1	69	Shift lever seat	1	127	Spring Washer 12	4
12	Washer 16	1	70	Screw M8X16	1	128	ScrewM12X45	4
13	Nut M16X1.5	1	71	Bearing 6205	1	129	Footing	1
14	Nut M16x1.5	1	72	Planetary Gear Z=22	1	130	Guide pillar	1
15	Washer 16	1	73	Washer 16	1	131	Micro switch	1
16	Synchronows belt weel	1	74	Nut M16X1.5	1	132	Screw M4X25	2
17	Circlip for hole D47	1	75	Ring Gear Z=70	1	133	Protective guard	1
18	Bearing 6204	1	76	Spacer Sleeve	1	134	Fixed crash barrier	1
19	Synchronows belt weel	1	77	Screw M6X25	6	135	Screw M4X25	4
20	Screw M5X20	4	78	Planetary Gear holder	1			
21	Front cover	1	79	Washer 22	1			
22	Centrifugal Switch	1	80	Nut M22X1.5	1			
23	Bottom Plate	1	81	Ring	1			
24	Bearing 6205	1	82	Bearing 6006	1			
25	Rotor	1	83	Dowel 8X18	1			
26	Stator	1	84	Stir Shaft	1			
27	Fastening screw M6X15	1	85	Straight Pin 10X30	1			
28	Motor shell	1	86	Dough mixer	1			
29	Bearing 6205	1	87	Stirred ball	1			
30	Bake Cover	1	88	Agitator	1			
31	Screw M5X20	4	89	Charging barrel	1			
32	Motor Fan	1	90	Nut M8	2			
33	Snap Spring D15	1	91	Ring Washer 11	2			
34	Snap Spring D20	1	92	Anchlr Pin	2			
35	Bearing 6204	1	93	Lock Handle	1			
36	Inputshaft Z=13	1	94	Barrel Holder	1			
37	Dowel 6X30	1	95	Flat Clamp	2			
38	Spacer Sleeve	1	96	Screw M8X16	6			
39	Gear Z=34	1	97	Lock Handle	1			
40	Spacer Sleeve	1	98	Locking Pin	2			
41	Gear Z=24	1	99	Washer 12	2			
42	Dowel 6X20	1	100	Nut M12	2			
43	Dowel 6X20	1	101	Screw M12X35	4			
44	Second Motion shaft Z=15	1	102	Ring Washer 12	4			
45	Bearing 6204	1	103	Straight Pin 8X16	2			
46	Snap Spring D20	1	104	Snap Spring D4	1			
47	Fork Shaft	1	105	Screw M8X20	4			
48	Shift Fork	1	106	Worm wheel splint	1			
49	Ring Washer 10	1	107	Lifting Gear	1			
50	Nut M10	1	108	Lifting worm shaft	1			
51	Steel ball D8	1	109	Screw hook	1			
52	Positioning Spring	1	110	Lifeing hook	1			
53	Screw M10X20	1	111	Washer 12	1			
54	Double Gear Z=27, 37	1	112	Spring	1			
55	Gear Z=46	1	113	Washer 12	1			
56	Output shaft	1	114	Nut M12	3			
57	Dowel 10X115	1	115	Screw M4X8	4			
58	Dowel 8X55	1	116	Capacitor 200UF	1			